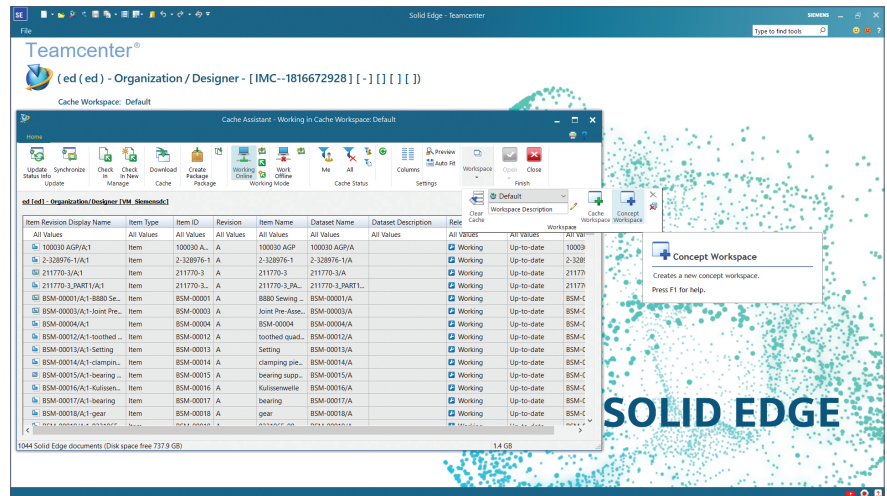


Benefits *continued*

- Communicate and share designs better with consistent visualization
- Maximize productivity with offline mode

Features

- Create, edit and manage Solid Edge parts, drawings and assemblies
- Compare multiple revisions with comprehensive revision support, full revision history and ability to revise and automatically capture related content
- Unlock the power of Teamcenter with hosted Active Workspace to search, access and highlight data in the Solid Edge environment with ease
- Perform impact analysis with quick access to „where used“ and associated drawings
- Explore design ideas without committing the files to Teamcenter with Concept Modeling
- Automatically create translated files of design data to easily distribute to external consumers
- Simplify and automate common designer activities with seamless integration in Solid Edge user interface
- Easy to implement and maintain seamless integration to Teamcenter and Solid Edge, no separate install required
- Promote the reuse of existing parts with geometric shape search, available as an add-on module
- Integration with Teamcenter Integrated Material Management (TC IMM)



Comprehensive revision management and access control capabilities guarantee the right people get the right information at the right time.

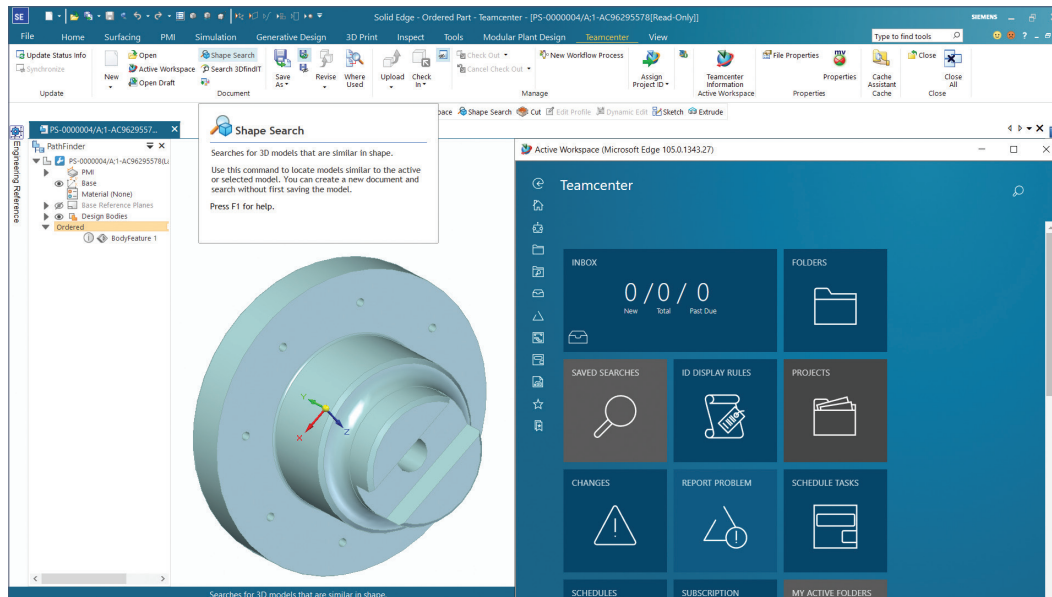
Whether users require the latest design revisions or a released revision, you can establish revision controls for parts, assemblies and drawings. Release processes ensure your data is protected throughout the lifecycle. Implicit and visual check in/check out status assures data is not overwritten while keeping all users aware of work being performed by others. To maximize productivity, teams can work offline, making design data available in the field.

Quickly search and access Solid Edge parts, assemblies and drawings to eliminate wasted time trying to find and share design information. Shape search capabilities identify similar parts in the Teamcenter database, based on shape and property data, to sort through duplicate designs and reduce costs from different suppliers.

The Solid Edge embedded client goes beyond workgroup computer-aided design (CAD) data management, utilizing a single source of product data, which enables design and manufacturing teams to work closely together to streamline product development and manufacturing delivery processes.

Seamless integration focused on Solid Edge users

The Solid Edge embedded client provides unparalleled connectivity between Solid Edge (a CAD solution) and Teamcenter (a PLM solution). Since both are Siemens Digital Industries Software solutions, they work together seamlessly through a transparent user interface (UI) that outperforms standard add-ons.



The pair are delivered in a single code, with no additional installation required. This allows for synchronized release and updates.

With the Teamcenter ribbon in Solid Edge, users can quickly access data management tasks, including search, open, check-in/check-out, properties, initiate workflows and identify parts that are in the release process. Solid Edge dialogs that handle file operations, such as the file open dialog, are enabled to directly browse Teamcenter. Solid Edge documents are automatically filtered and displayed using Teamcenter attributes such as item ID. Built-in search functionality allows quick, easy single search queries as well as complex search queries as defined in Teamcenter.

Solid Edge pathfinder can display specified attributes from Teamcenter, and users can access available Teamcenter operations by right clicking on displayed Solid Edge documents. Pathfinder displays check-out status, including user identity, Teamcenter status and any revisions that have been made since opening the assembly.

The Solid Edge embedded client offers the ability to visualize all Solid Edge data, including parts, assemblies, draft documents, family of parts and assemblies, part and assembly product manufacturing information (PMI), model views, adjustable parts, tubes, pipes and weld beads, all from within Teamcenter.

Integration with Teamcenter also allows users to more quickly and accurately create, validate, analyze and document product design and the associated manufacturing information by automatically generating and managing lightweight visualization files (the JT™ data format) for Solid Edge part models and .DXF, .DWG and .PDF files for Solid Edge draft models.

Concept Modeling in the Solid Edge Embedded Client enables rapid creation and evaluation of multiple design scenarios with Teamcenter as the backbone. Designers can explore design ideas without committing the files to Teamcenter. This allows for the creation or addition of new parts to assemblies without creating a part number and then publishing or deleting a design when it's approved or rejected.

Integration with Teamcenter Integrated Material Management

Teamcenter Integrated Material Management (TC IMM) is a PLM managed source of material definitions used for assignment and consumption throughout your team and departments. The comprehensive solution helps organizations manage their material data throughout the product lifecycle and provides a centralized platform for capturing, organizing, and accessing material information, guaranteeing only assigned and approved materials are being used. Solid Edge and TC IMM integration allows you to control material data for accuracy, consistency, traceability and security. TC IMM optimizes material usage, reducing waste and environmental impact, supporting sustainability in manufacturing and can ensure accurate, eco-friendly material selection.

Other supported functionalities include:

- Search for, place, add and replace components in a Solid Edge assembly
- Bulk load existing Solid Edge data with "Add to Teamcenter," which includes comprehensive tools to identify and resolve issues
- Synchronize Solid Edge document properties with Teamcenter attributes
- Capture Solid Edge assembly structures to build the Teamcenter product structure, then synchronize the two structures to capture changes
- Save new documents to Teamcenter using business object rules for item ID, revision and property definitions
- Copy and revise assemblies using the Solid Edge structure editor
- Comprehensive integration with Active Workspace provides search, open, add and replace interaction as well as cross-highlighting between Teamcenter bill-of-materials (BOM) and an active Solid Edge session
- Manage links between Solid Edge parts and assemblies to their drawings and other referenced files
- Capture non-Solid Edge documents linked to Solid Edge files (Microsoft Word and Excel spreadsheet software, images and translated files)

Flexible and scalable

The Solid Edge embedded client is built to be flexible and scalable to support a company's ever-changing needs. Synchronized releases of Solid Edge and the Solid Edge embedded client ensure Teamcenter users can quickly move to the latest Solid Edge release.

Integration is optimized for both local area network (LAN) and wide area network (WAN) environments. The scalability to WAN environments enables geographically distributed design resources and the extended supply chain to connect to a single database.

Teamcenter advantage

The integration using the Solid Edge embedded client is supported by both Teamcenter and Teamcenter Rapid Start, which power innovation and productivity by connecting people and processes with knowledge.

- Users of Teamcenter can easily expand the scope of their PLM implementation by taking advantage of a comprehensive portfolio of applications, as well as its proven scalability in terms of performance and global implementation.
- Teamcenter Rapid Start, meanwhile, is a preconfigured deployment option for Teamcenter that manages design data as well as everyday tasks and processes. It provides an ideal entry point into the Teamcenter product line for small and medium-sized businesses.

New Extending value section:

Solid Edge software is an integrated set of powerful, comprehensive and accessible tools that advance all aspects of the product development process. Solid Edge addresses today's complex challenges with automated digital solutions that cultivate creativity and collaboration.

By harnessing the latest innovative technologies in mechanical and electrical design, simulation, manufacturing, publications, data management and cloud-based collaboration, using Solid Edge dramatically shortens time-to-market, provides greater production flexibility and significantly reduces costs with its collaborative and scalable solutions.

Minimum system configuration

- Windows 10 Enterprise or Professional (64-bit only) version 1809 or later
- 16 GB (RAM)
- 65K colors
- Screen resolution: 1920 x 1080
- 8.5 GB of disk space required for installation

**Siemens Digital
Industries Software**
[siemens.com/software](https://www.siemens.com/software)

Americas
1 800 498 5351

Europe
00 800 70002222

Asia-Pacific
001 800 03061910

For additional numbers, click [here](#).

© 2024 Siemens. A list of relevant Siemens trademarks can be found [here](#). Other trademarks belong to their respective owners.

78037-D7 9/24 K