

PARTQUEST

The Cloud Platform for advanced electronic component management

PartQuest is a suite of cloud-based applications that revolutionizes how electronic components are searched, accessed, and used in PCB design projects.

It provides a continuous digital connection between PCB development teams and the electronic components ecosystem, improving efficiency and accuracy in component selection and integration.

Why choose PartQuest?

Access to a vast component catalog

PartQuest provides access to a comprehensive catalog of over 600 million manufacturer part numbers, enabling fast and efficient searches for the components needed in your design.

Instant download of ready-to-use ECAD models

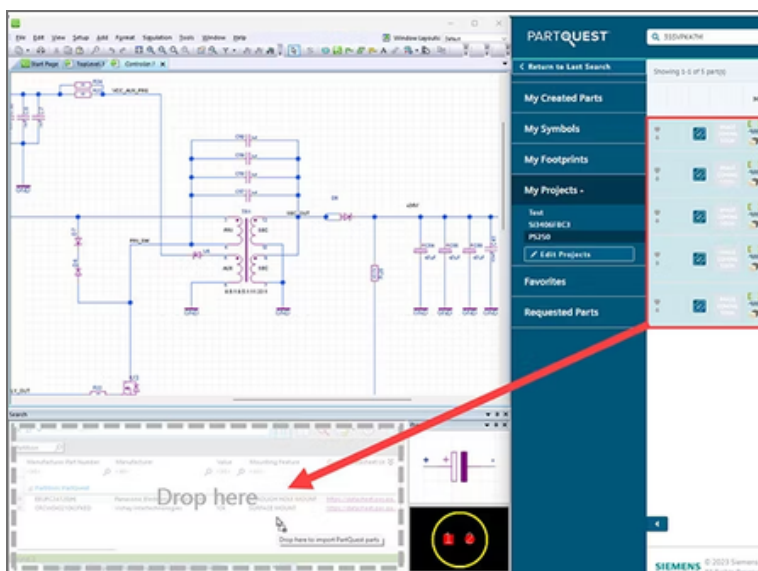
With PartQuest, you can download prebuilt symbols, footprints, and 3D models ready for immediate use—streamlining the design process and reducing the time spent on manual model creation.

Integration with real-time supply chain data

The platform provides instant visibility into procurement information from over 125 global distributors, allowing informed decision-making based on current pricing and availability.

Advanced tools for custom component creation

PartQuest includes intuitive wizards for creating custom symbols and footprints, simplifying the management of complex components and enhancing the overall design workflow.



PartQuest Portal Gain immediate access to over 100 million ready-to-use ECAD models.

Simply search, select, and drag the component directly into your Xpedition or PADS Professional Designer schematic—automatically including all the most relevant electrical properties. The process is simple, fast, and significantly reduces development time while minimizing manual errors.


If a model is unavailable, it can be requested directly from the platform and will be delivered within 24 hours.

PartQuest in Action – From Search to Layout in Just a Few Clicks

PartQuest eliminates manual and repetitive tasks in electronic component management. Designers can search for a component, verify availability and compatibility, download the symbol, footprint, and 3D model, and place it directly into the PCB design.

The result? A faster, smoother, and error-free workflow.

Use Case: accelerating the development of a new PCB



CHALLENGE	SOLUTION
An electronics design team needed to develop a new PCB for a consumer product under tight deadlines. Manual creation of ECAD models and supply checks was delaying progress.	By using PartQuest, the team selected components from an online catalog with up-to-date supply chain data and downloaded CAD-ready models to integrate directly into the design.
RESULTS	
<ul style="list-style-type: none">• 60% reduction in PCB design time• Elimination of errors caused by outdated or inconsistent models• Improved collaboration between design and procurement teams	

Three Questions to know if PartQuest is right for you

- 1 *Is your team spending too much time creating or modifying component models?*
- 2 *Do you struggle to get reliable pricing and availability data during design?*
- 3 *Do you want to reduce errors and speed up your PCB layout development?*

If you answered yes to at least one, PartQuest can make a real difference.

PartQuest is the right choice for...

- 🔧 Electronic designers seeking efficiency and precision
- 📈 Companies looking to reduce time-to-market
- 👥 Cross-functional teams needing clear, up-to-date data sharing

Optimize your component management today for your next design project.