

OPCENTER APS

Increases productivity in high-mix, low-volume productions

Opcenter Advanced Planning and Scheduling (APS) enables manufacturers to react quickly and intelligently to unexpected changes - such as changes in product, supply, or demand - and respond to shorter lead times and meet customer demands.

It improves the synchronization of your production processes, giving you greater visibility and control, increasing utilization and on-time delivery, and reducing inventory levels and waste.

Why Choose Opcenter APS?

Manage variations in products

Production Scheduling in Opcenter has built-in scheduling algorithms that can take into account multiple product attributes and use them to group like operations to minimize changeover times and ensure that the orders are delivered on time.

Take Constraints into account

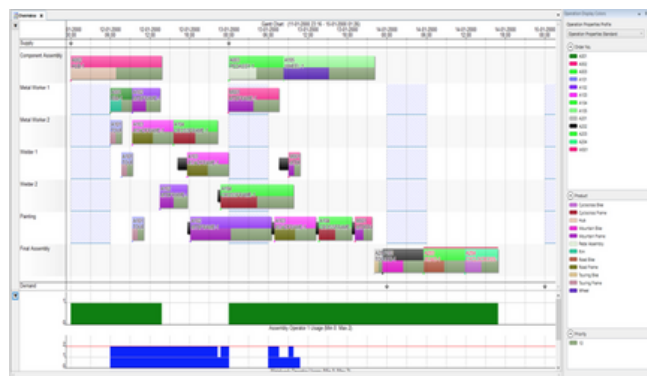
As a multi-constraint scheduling tool, Opcenter APS can take into account the availability of materials, tooling, and labor to produce a feasible schedule. This gives the planner the confidence to know that the work-to-do lists that are being sent to the shop floor will be achievable.

Handle variability of demand

In the case of variable demand, the process starts with long-term orders and forecasts. Once the system has calculated the production required, the planner can easily visualize and interact with the result to see how the varying demand should be reflected in plans for production capacity.

Consider complex subassemblies

With Opcenter Scheduling, it is possible to consider the production and availability of subassemblies, whether they are produced in an area under the control of the planner or elsewhere, to guarantee an achievable schedule, flag up, and solve any material availability issues early on.



APS improves the synchronization of production processes, giving greater visibility and control to production managers.

The Importance of Scheduling in Production

That's why scheduling management software like Opcenter APS can have a big impact on your factory's productivity

The purpose of Scheduling in Production is to minimize production time and costs by telling a production facility what to do, when to do it, and what personnel and equipment to use. Production Scheduling aims to maximize the efficiency of the operation and reduce costs.

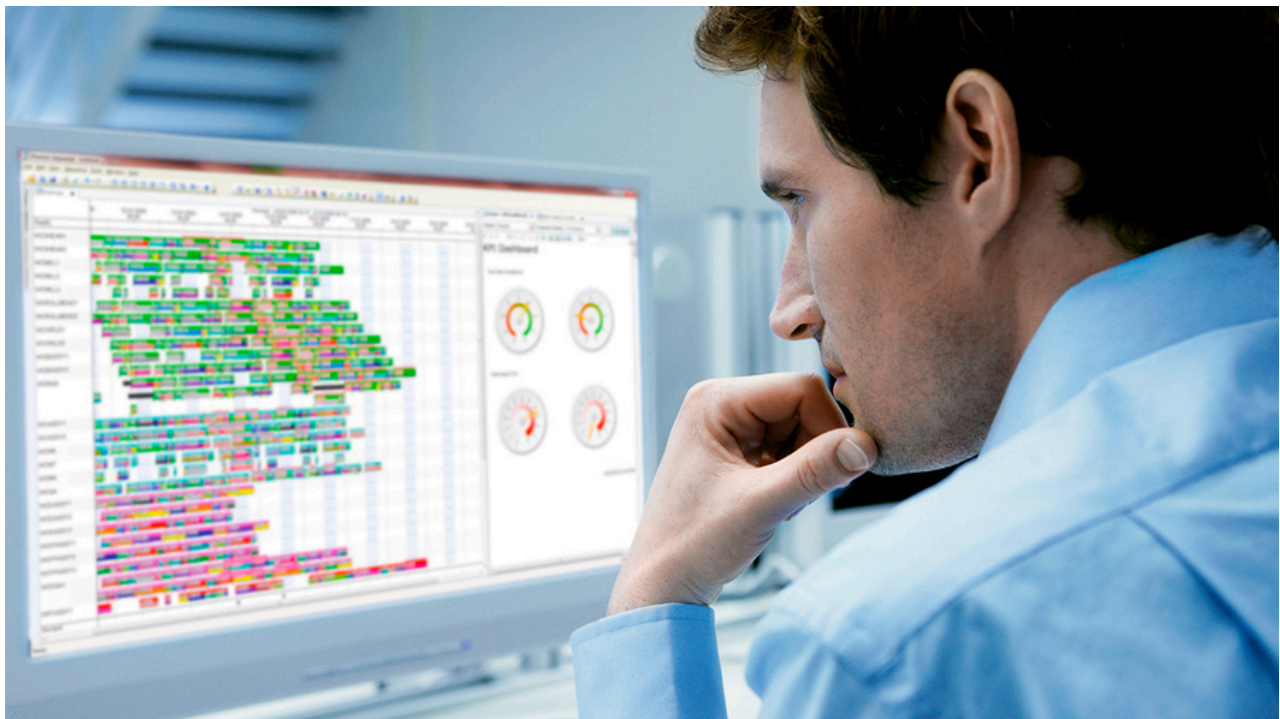
Detailed scheduling software is an important tool for many companies because it can have a major impact on the productivity of a process.

Typically, the input is production orders that have a process cycle associated with each one, defining the operational steps to make the product.

The user can then upload orders to individual resources using scheduling rules and interact with the schedule using Gantt charts and other generated charts. The output is a production order for each resource.

Planning and Scheduling with Opcenter APS: the benefits

- Improved utilization of resources
- Reduced setup time
- Reduced inventory and work-in-progress
- Detailed visibility of production load
- Faster modeling of hypothetical scenarios
- Improved on-time delivery



Manufacturers can react quickly and intelligently to unexpected changes while being able to respond to shorter lead times and meet customer demands.