

OPTI TOOLS

Software tools designed with manufacturers for manufacturers

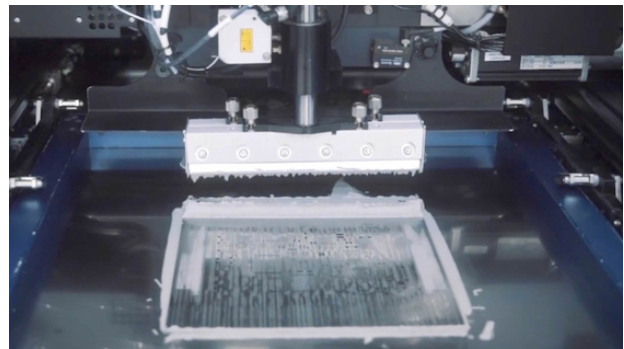
The OPTI Tools are software tools developed by Var Industries to meet the specific needs of PCB Assembly manufacturers. All the OPTI Tools are based on our decades of experience and created in close collaboration with customers to solve real problems in the field.

Each tool is strictly integrated with the Siemens Opcenter platform and designed to address a specific need along the Assembly Line.



OPTIMAN

OPTIMAN is a full client for Manual Assembly that allows you to manage components search, and the placement of THT components and the box build. Allows you to verify the setup of the through-hole assembly station and track both materials used and operators. Lets you record defects and progress in production. It is fully integrated with the Opcenter IoT Manufacturing database.



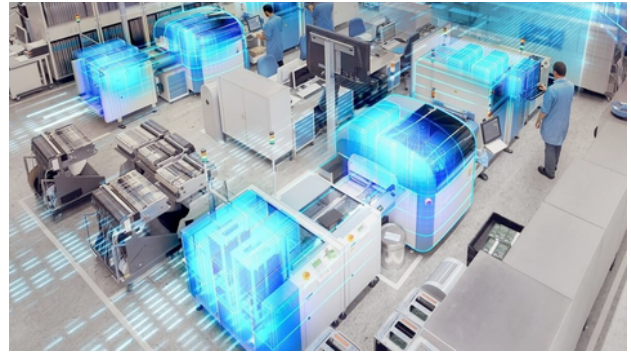
OPTIPASTE

OPTIPASTE is an advanced solder paste management tool developed by Var Industries. It manages the expiration and life cycle of the material in the refrigerator. Controls acclimatization time to prevent incorrect use of the screen printing machine. It uses data from the Opcenter IoT Manufacturing database, with which it is fully integrated.



OPTIMAG

OPTIMAG is the solution developed by Var Industries for managing semi-finished panels inside the production shop floor. It can work in conjunction with advanced material management, creating picking lists for semi-finished products. It can work by interfacing with AGV fleets. It uses data from the Opcenter IoT Manufacturing database, with which it is fully integrated.



OPTIPHASE

OPTIPHASE is a simple client developed by Var Industries that allows you to advance a single serial or an entire production order. It allows to expand in an agile and flexible way the control of the production in the whole factory. It allows the selection and visualization of the running work order. It uses data from the Opcenter IoT Manufacturing database, with which it is fully integrated.



OPTIOLE

OPTIOLE calculates Overall Line Effectiveness in accordance with World Class Manufacturing specifications. It allows input the causes of downtime or slowdown, and it is configurable according to customer specifications in terms of reasons and defects. It offers real-time reporting and accounting per work order or work shift. It uses data from the Opcenter IoT Manufacturing database, with which it is fully integrated.



OPTIOUT

OPTIOUT is a tool developed by Var Industries for the management of X-Outs on the SMT line. Allows avoiding the assembly of boards with badmarks. Allows to dynamically select boards based on information from inspection and test machines. It uses data from the Opcenter IoT Manufacturing database, with which it is fully integrated.