

SIMCENTER FLOTHERM XT

Thermal analysis for electronics to optimize time and cost

Simcenter Flotherm XT is a CAD-centric electronics cooling simulation software that helps reduce time to market and achieve first-time-right designs. It eliminates design iterations by connecting and integrating MCAD and ECAD workflows.

You can successfully tackle the challenges of increasing product miniaturization by rapidly optimizing components such as heat sinks, fans, TECs, or liquid cooling systems through parametric studies.

Why choose Simcenter Flotherm XT for thermal analysis?

The most complete and accurate solution on the market

Simcenter Flotherm XT is the most comprehensive and accurate solution available, backed by over 30 years of continuous development. This Siemens simulation tool is specifically designed for specialists in thermal analysis of electronic systems.

Thermal simulation has never been easier

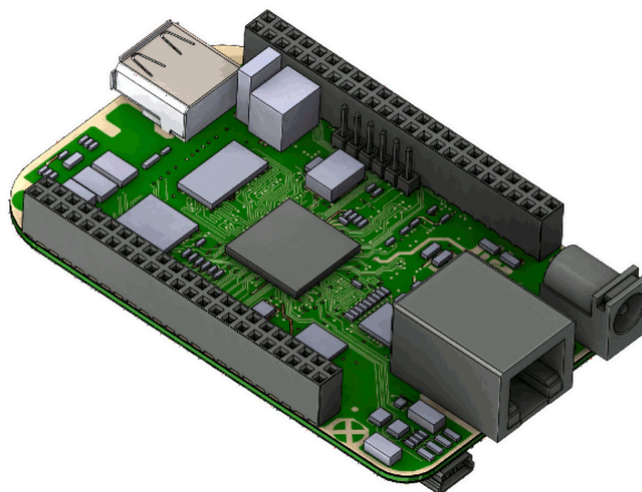
Despite supporting simulation of devices with any level of complexity, the tool is remarkably easy to use. It is fully integrated into the 3D CAD workspace. The SmartPart™ technology enables rapid creation of electronic components such as heat sinks, enclosures, and fans.

Technology tailored for electronics

Flotherm XT is dedicated to Electronics Thermal Analysis and Electronics Cooling Simulation. Features such as PCB import in ODB++ format, FLOEDA Bridge, and Joule heating effects give designers confidence in the thermal performance of their devices.

Effective coverage of the entire supply chain

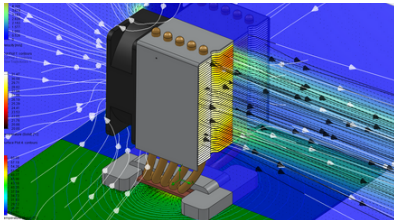
Flotherm XT includes ready-to-use libraries of electronic components (IC packages, fans, heat sinks, TECs, etc.) for designers. Full support for PDML files enables efficient import of thermal models from across the supply chain.



Thanks to the FLOEDA Bridge module, Simcenter Flotherm XT offers unmatched interoperability with the EDA domain.

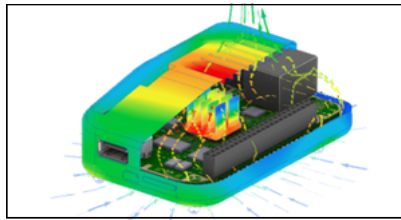
Benefits of thermal simulation with Simcenter Flotherm XT

Thermal simulation for electronics enhances innovation, shortens time to market, improves product quality and reduces costs



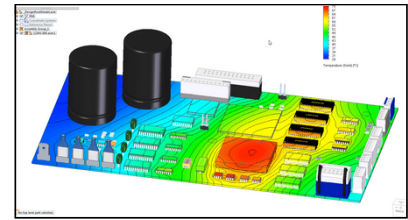
Simulation-Driven Design

With SmartParts, Simcenter Flotherm XT enables simulation-driven design of new products. Results are optimized because simulation is not postponed to the end, but integrated throughout the entire design process.



Mechanical CAD Integration

Simcenter Flotherm XT, along with Simcenter FLOEFD, is the only fully CAD-embedded CFD solution on the market dedicated to electronics thermal simulation. Developed by Siemens, it easily imports models from all major MCAD systems.



Electronic CAD Integration

Import PCB designs from any ECAD tool (including Xpedition, PADS Professional, Cadence, Zuken, Altium, etc.), create the model in just 5 minutes, and run thermal simulations at any stage of the electronic design process.

Results

Reduced Time
to Market

First-Time-Right
Production

No Design
Iterations

Lower Costs and
Higher ROI

