

SIMCENTER FLOEFD

3D CFD Analysis inside your CAD software in the early stages of the project

Simcenter FLOEFD helps you to shorten your design cycle time and get your products to market faster, moving 3D CFD analysis and simulation earlier in the design process.

Since Simcenter FLOEFD is fully integrated into your 3D mechanical CAD (NX, Solid Edge, Creo, Catia, and Solidworks), you can easily explore the design space to create better designs, faster.

WHY CHOOSE SIMCENTER FLOEFD FOR 3D CFD ANALYSIS?

It is the only CFD Solution for Design Engineers

With Simcenter FLOEFD, design engineers can take care of fluid dynamics and thermal simulation directly. Siemens's tool has a very fast learning curve and does not require CFD experts to build accurate models. It is the first tool to bridge the gap from R&D usage to mass market engineering simulation software.

Frontloading CFD improves Products and Competitiveness

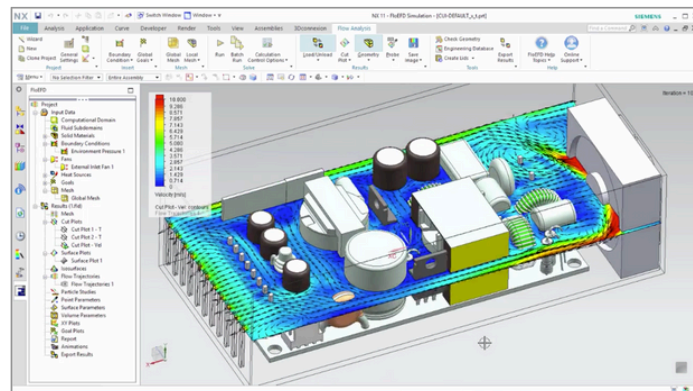
Simcenter FLOEFD allows you to conduct simulation and 3D CFD analysis early and often in the design cycle so that you can choose among different alternatives and arrive early on the market with the best solution for both you and your customers.

It is integrated with mechanical CAD. Yes, just what you see!

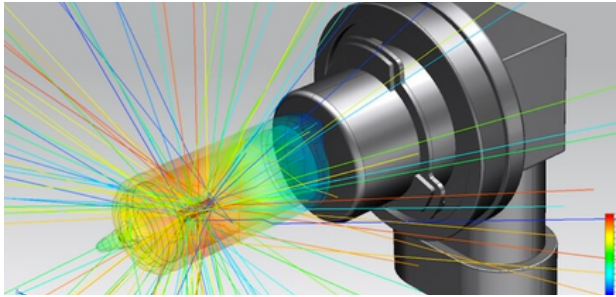
You can use Simcenter FLOEFD for your 3D CFD analysis directly in NX, Creo, CATIA V5, or Solid Edge in order to explore the full potential of your ideas quickly, without disrupting your design process. Any barrier between MCAD and CFD simulation is overcome!

It is designed specifically for Electronics Design

Simcenter FLOEFD includes several modules dedicated to the electronics industry such as the LED module, battery module, and the FLOEDA Bridge, which imports PCB designs from any ECAD system. It also includes several libraries of electronic components, fans and heat sinks ready to use.

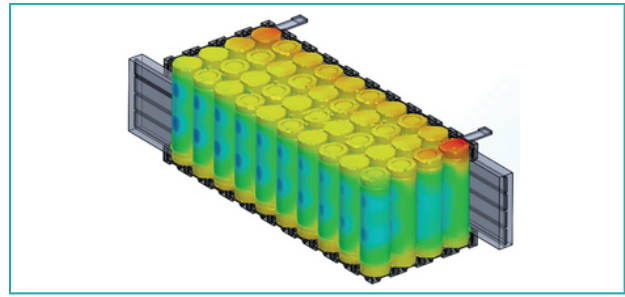


The integration between Simcenter FLOEFD and NX allows CFD simulations to be performed at an early stage of the design process, directly in mechanical CAD.



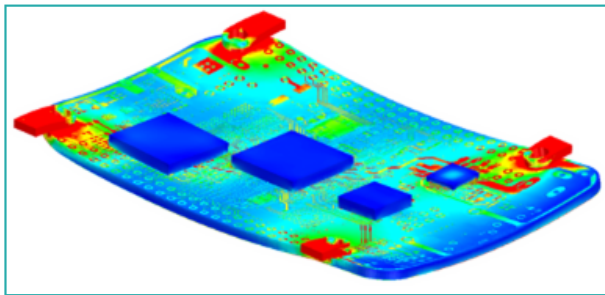
LED-Module

Simcenter FLOEFD LED module provides an important set of analysis capabilities for lighting engineers and designers.



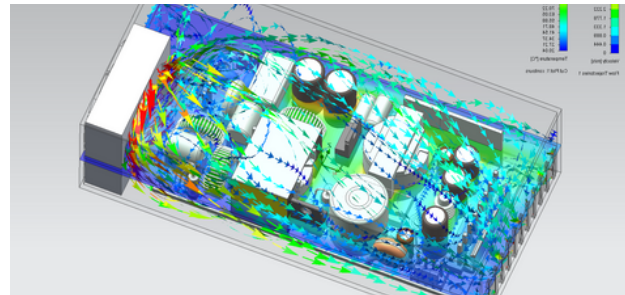
Power Electrification Module

The Power Electrification module of Simcenter FLOEFD provides more accurate modeling of batteries for the Simcenter FLOEFD user.



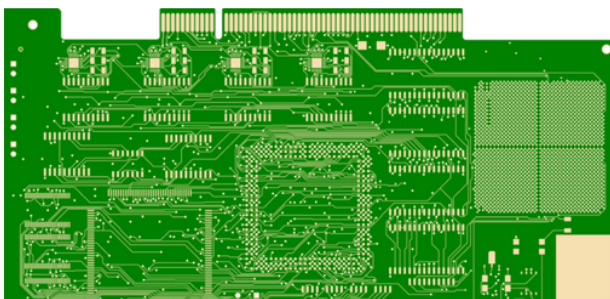
Structural Module

It performs linear static stress analysis, thermal expansion analysis, and extraction of natural frequencies of vibration.



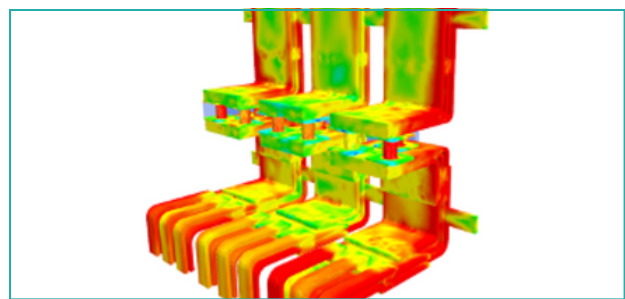
Electronics Cooling Module

The Simcenter FLOEFD Electronics Cooling module enables you to accurately predict the thermal behavior of electronic devices.



EDA BRIDGE MODULE

Simcenter FLOEFD EDA Bridge module is a unique solution in the market that provides capabilities for detailed import of PCBs design into your mechanical CAD tool in the preparation of your thermal simulation.



Electromagnetic Module

It is based on the Simcenter Magnet solver and allows the simulation of the effects of alternating current (AC) and electromagnetic (low frequency) effects.